

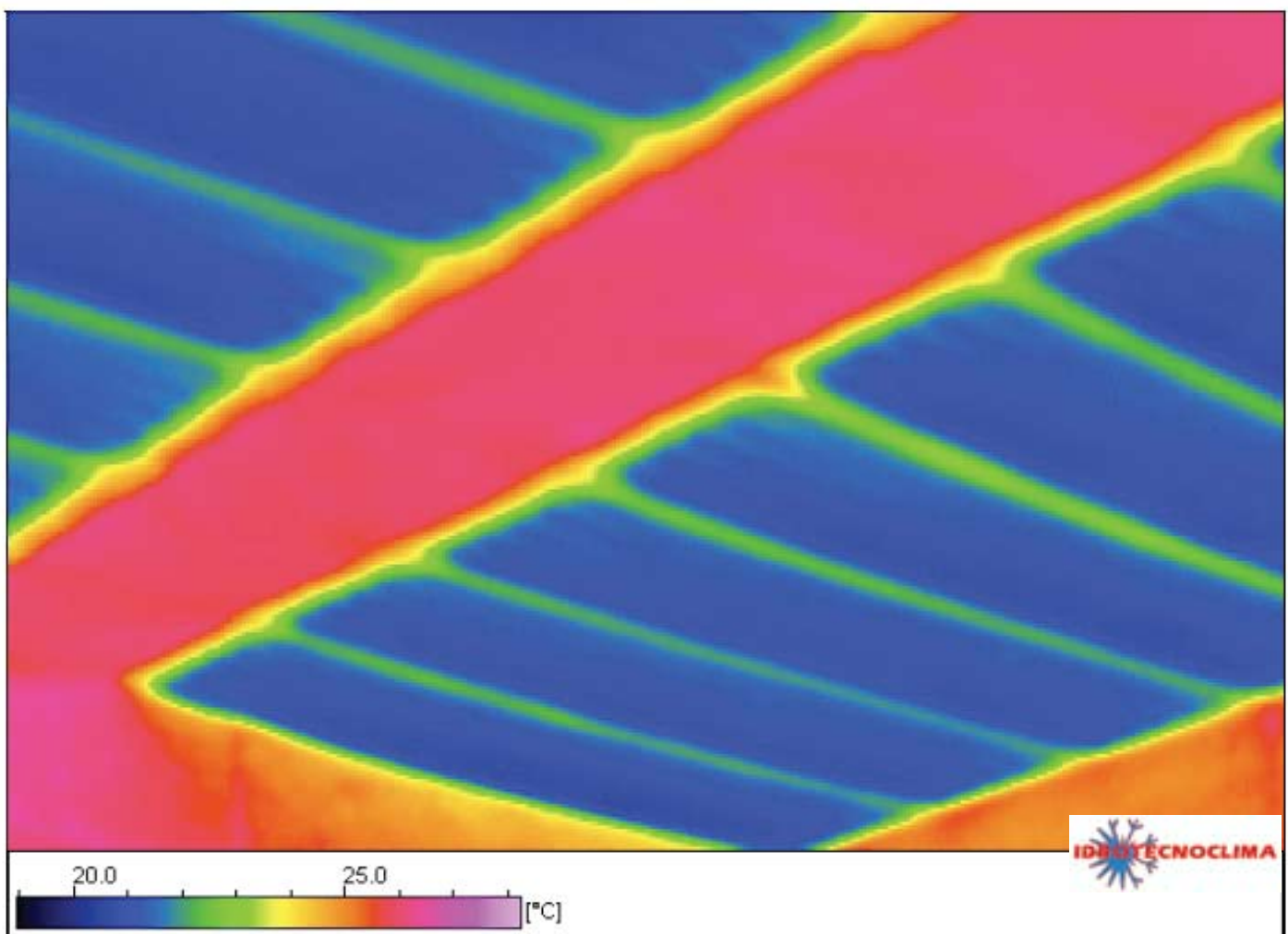
**Parete in Riscaldamento** con  $\Delta T$  tra temperatura acqua di alimentazione del pannello e temperatura ambiente di  $15^{\circ}\text{K}$ ; **potenza di  $112 \text{ W/m}^2$**   
( $10^{\circ}\text{K} - 70 \text{ W/m}^2$ ) ( $20^{\circ}\text{K} - 157 \text{ W/m}^2$ ) ( $25^{\circ}\text{K} - 205 \text{ W/m}^2$ )

**Parete in Raffrescamento** con  $\Delta T$  tra temperatura acqua di alimentazione del pannello e temperatura ambiente di  $10^{\circ}\text{K}$ ; **potenza di  $63 \text{ W/m}^2$**   
( $8^{\circ}\text{K} - 49 \text{ W/m}^2$ ) ( $12^{\circ}\text{K} - 77 \text{ W/m}^2$ ) ( $14^{\circ}\text{K} - 92 \text{ W/m}^2$ )

**Soffitto in Riscaldamento** con  $\Delta T$  tra temperatura acqua di alimentazione del pannello e temperatura ambiente di  $15^{\circ}\text{K}$ ; **potenza di  $87 \text{ W/m}^2$**   
( $10^{\circ}\text{K} - 55 \text{ W/m}^2$ ) ( $20^{\circ}\text{K} - 120 \text{ W/m}^2$ ) ( $25^{\circ}\text{K} - 190 \text{ W/m}^2$ )

**Soffitto in Raffrescamento** con  $\Delta T$  tra temperatura acqua di alimentazione del pannello e temperatura ambiente di  $10^{\circ}\text{K}$ ; **potenza di  $73 \text{ W/m}^2$**   
( $8^{\circ}\text{K} - 59 \text{ W/m}^2$ ) ( $12^{\circ}\text{K} - 90 \text{ W/m}^2$ ) ( $14^{\circ}\text{K} - 104 \text{ W/m}^2$ )

**Rese termiche certificate secondo le normative EN 14037 e EN 14240.**



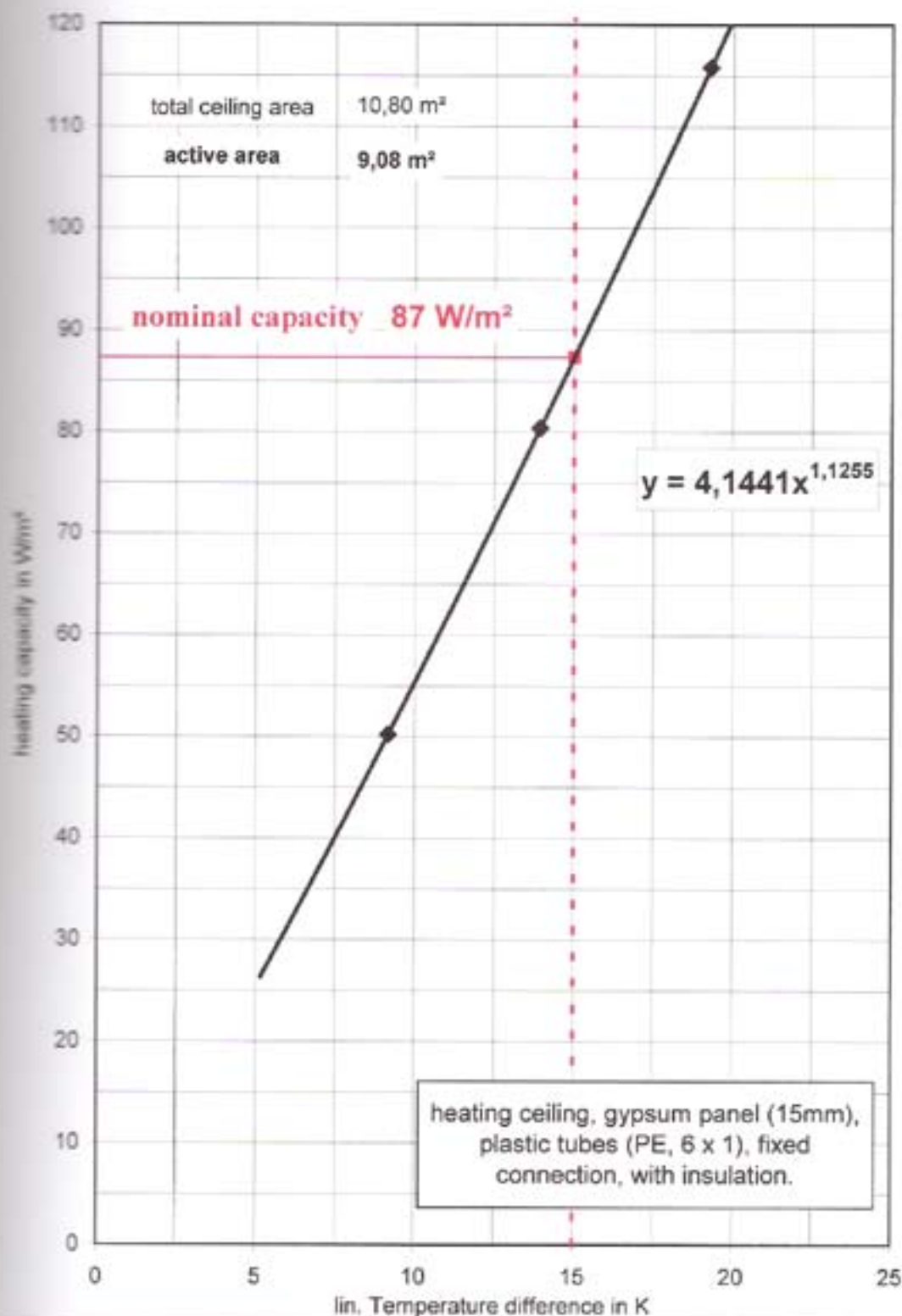
measuring point 2: left side of ceiling

test report no. DF07 H26.2335

page 4/6



Typ: Pannello radiante domuslife



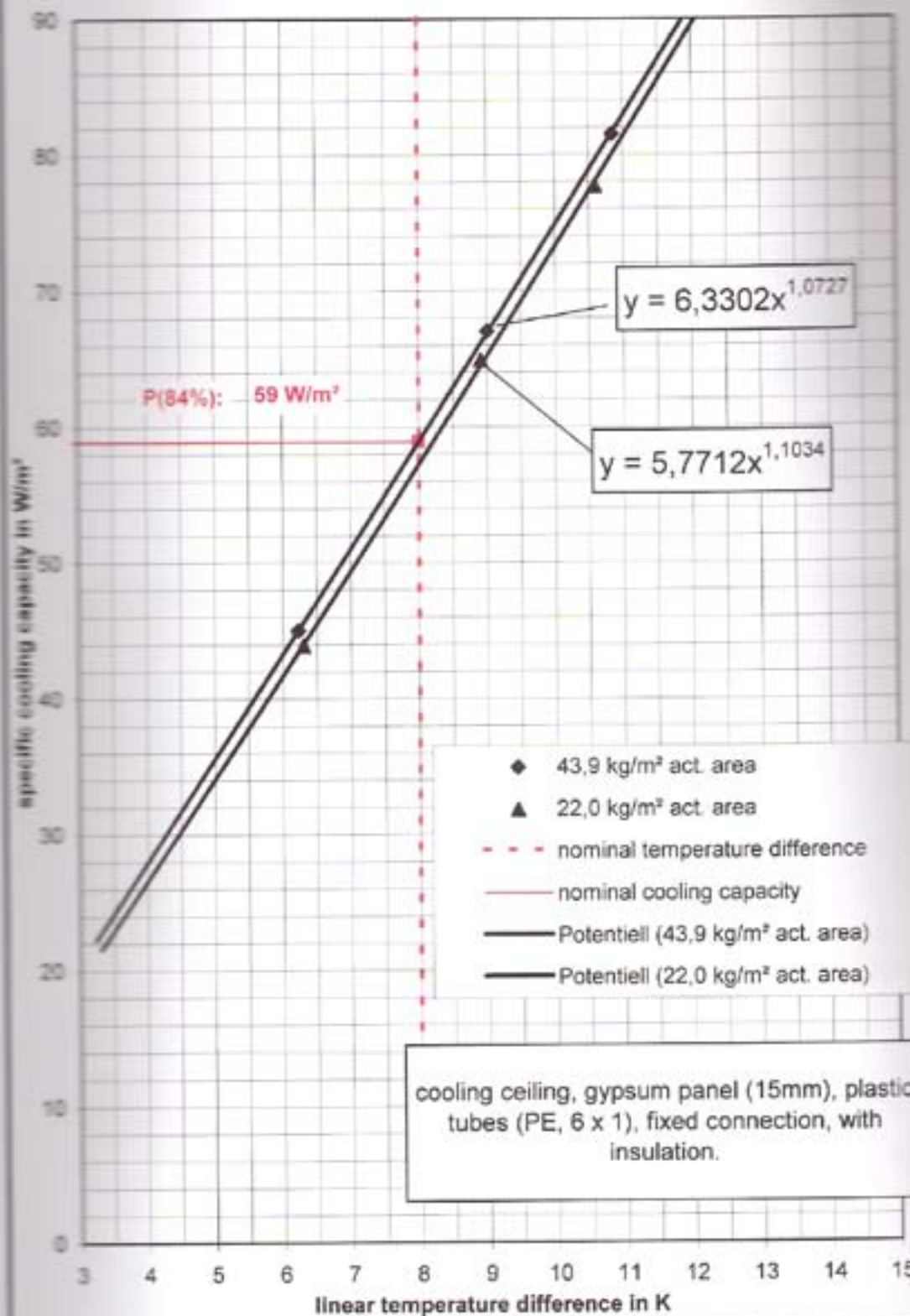
test report no.: VF07 K26.2334

page 7/9

applicant: **Idrotecnoclima SAS**

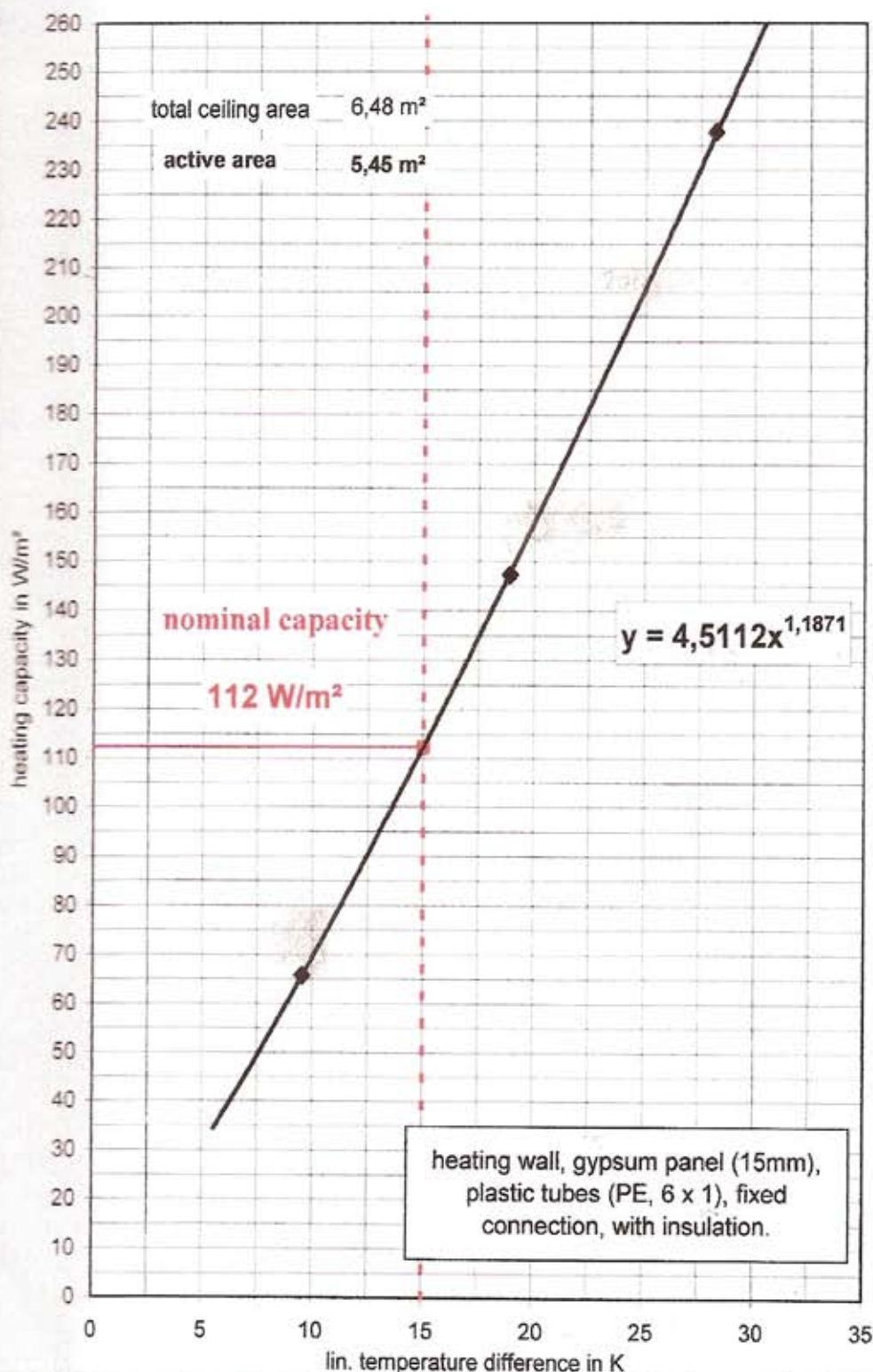


type: Pannello radiante domuslife





Typ: Pannello radiante domuslife



test report no.: VF07 K26.2337

page 7/9

applicant: **Idrotecnoclima SAS**

type: Pannello radiante domuslife

